

Inserts

General turning



Characteristics:

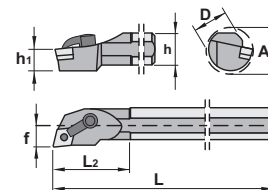
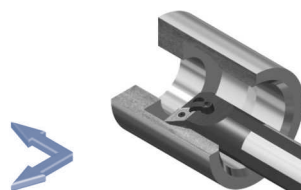
Multipurpose boring bar equipped with rhombic negative double side insert (angle 80°) with strong cutting edge. The center pin and top clamp ensure good rigidity and stability in roughing applications.

Applications:

Internal boring bar for general applications, roughing, semi-finishing and finishing. Specially recommended for cermet, ceramic and K10, P10 grade inserts.

For low powered machines and small pieces choose boring bars Ref. SCLC (Page: C.30).

Axial: -5°
Radial: -13.5°



MCLN-K 95°

Ref.		D	h	h ₁	L ₁	L ₂	f	A	Insert size	Kg
S25T MCLN R/L 12-K		25	23	11,5	300	33	17	31	CN.. 1204..	0,700
S32U MCLN R/L 12-K		32	30	15,0	350	50	22	39	CN.. 1204..	2,050
S40V MCLN R/L 12-K		40	37	18,5	400	60	27	48	CN.. 1204..	3,750

Ref.						
S25T MCLN R/L 12-K		2613	1186	5003	-	1686
S32U MCLN R/L 12-K		2613	1086	5003	ICSN-432	1656
S40V MCLN R/L 12-K		2613	1086	5003	ICSN-432	1656

	CN..				Negative 80° rhombic inserts.				
	Ref.	CN.. 1204..	l	s	d	For more information see page: A.18			
			12,90	4,76	12,70	CNMG-CF	CNMG-CM	CNMG-CR	CNMG-CS
						CNMG-CMC	CNMG-CMF	CNMG-CMR	CNMG-CMM